

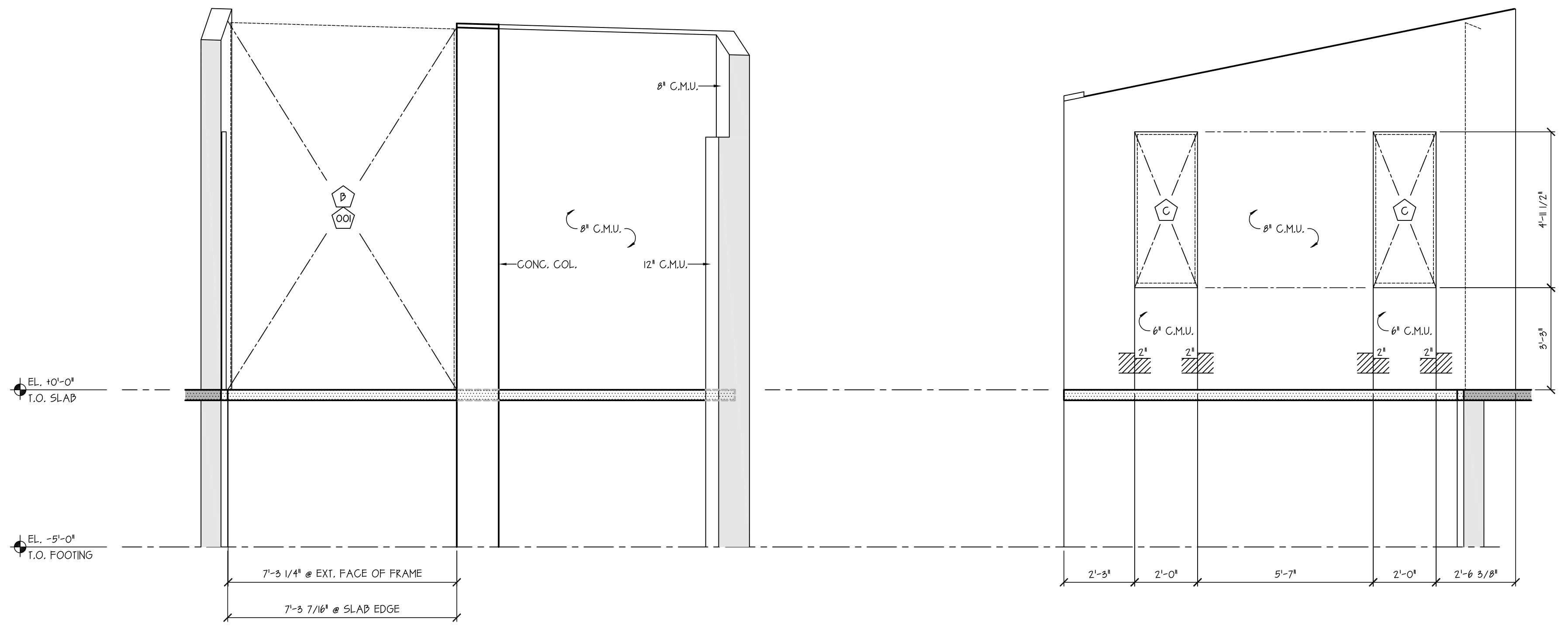
**Global Services**  
 Brian C. Guhl  
 5660 English Oaks Lane  
 Naples, Florida 34119  
 (239) 566-8834 ph./fax  
 bghul@acglobalservices.com

**Allen**  
 Concrete & Masonry

Allen Concrete & Masonry, Inc.  
 6301 Shirley Street  
 Naples, Florida 34109  
 (239) 566-1661 ph.  
 (239) 566-8515 fax

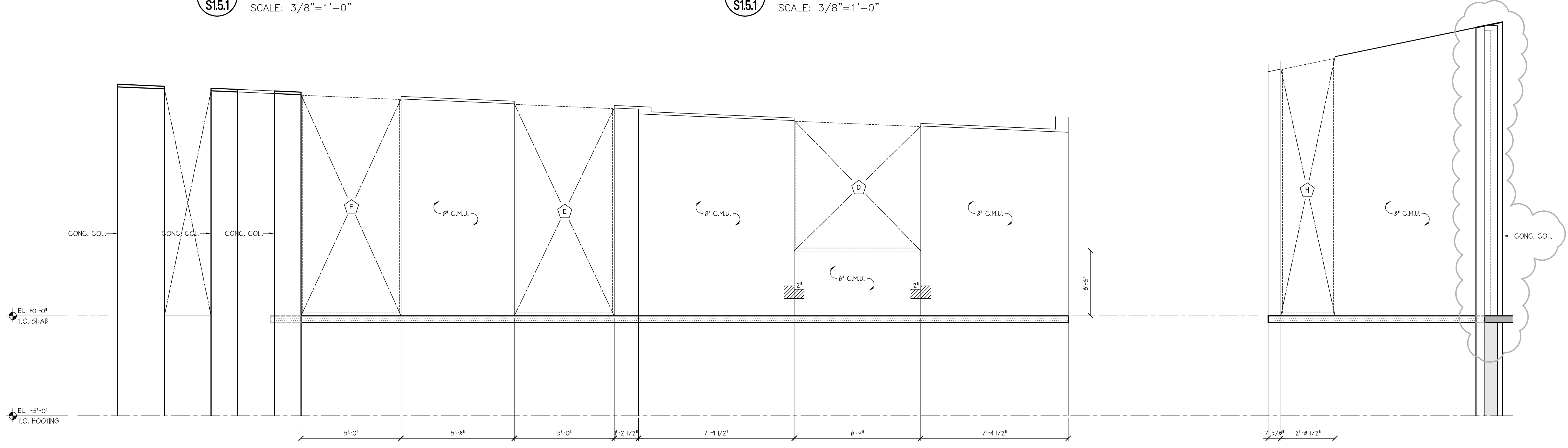
**REVISIONS:**

NO.	DATE	DESCRIPTION
0	02/09/08	ISSUED FOR FIELD USE
1	02/09/08	OWNER CHANGES



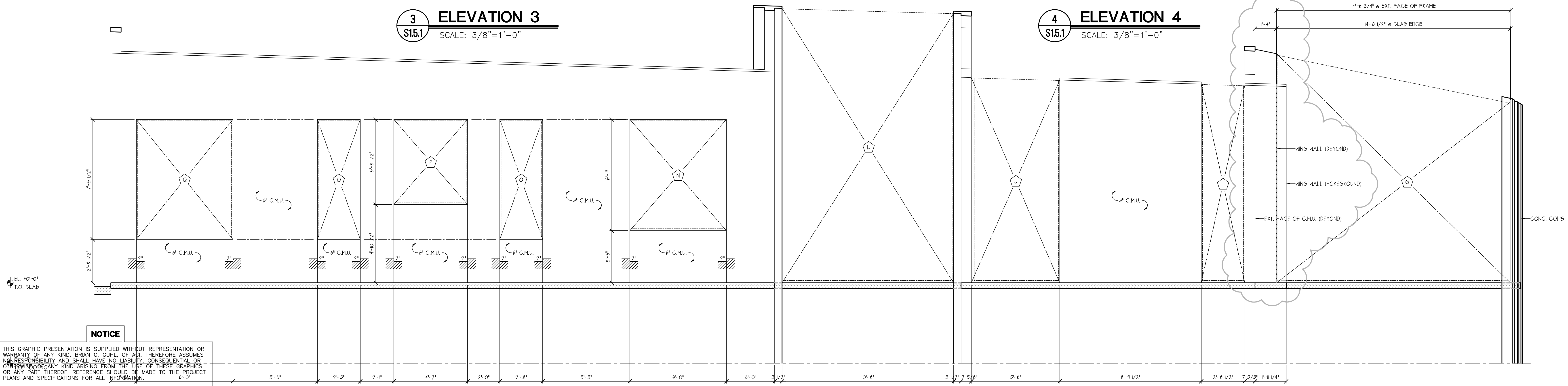
**1 ELEVATION 1**  
 S15.1 SCALE: 3/8"=1'-0"

**2 ELEVATION 2**  
 S15.1 SCALE: 3/8"=1'-0"



**3 ELEVATION 3**  
 S15.1 SCALE: 3/8"=1'-0"

**4 ELEVATION 4**  
 S15.1 SCALE: 3/8"=1'-0"



**5 ELEVATION 5**  
 S15.1 SCALE: 3/8"=1'-0"

**NOTICE**  
 THIS GRAPHIC PRESENTATION IS SUPPLIED WITHOUT REPRESENTATION OR WARRANTY OF ANY KIND. BRIAN C. GUHL, OF AGI, THEREFORE ASSUMES NO RESPONSIBILITY AND SHALL HAVE NO LIABILITY, CONSEQUENTIAL OR OTHERWISE, OF ANY KIND ARISING FROM THE USE OF THESE GRAPHICS OR ANY PART THEREOF. REFERENCE SHOULD BE MADE TO THE PROJECT PLANS AND SPECIFICATIONS FOR ALL INFORMATION.  
 THIS SHOP DRAWING, TO AID IN THE COORDINATION OF THE PROJECT, SHALL BE SUBMITTED BY THE GENERAL CONTRACTOR TO THE VARIOUS TRADES, ENGINEERS AND ARCHITECT FOR THEIR APPROVAL.  
 NOT FOR CONSTRUCTION UNLESS APPROVED BY THE PROJECT ARCHITECT. ALL DIMENSIONS AND CONDITIONS TO BE FIELD VERIFIED.  
 FOR VISUAL ASSISTANCE ONLY. DO NOT SCALE!

**SCHULTE RESIDENCE**  
 A Layout Drawing for Allen Concrete & Masonry  
 490 Palm Circle  
 Naples, Florida

COMMISSION NO.: 08-1120  
 FILE NO.: FLPLAN.DWG  
 DRAWING DATE: 11/20/08  
 DRAWN BY: B.C.G.  
 CHECKED BY: B.C.G.

**DRAWING TITLE:**  
 ELEVATIONS OF EXTERIOR WALLS, AREAS 1 THRU 5

**DRAWING NO.**  
 S15.1